

THE OUTLET

The Official Member Newsletter of CORE Electric Cooperative

May 2022

SAFE & SOUND

Safety near electric lines



CORE linemen demonstrate the type of electrical arc — typically hotter than the surface of the sun — that can be created when a person makes contact with a vehicle energized by a downed or exposed line.

May is National Electrical Safety Month and the perfect opportunity to revisit important information that could save your life if you encounter a **downed or exposed electrical line**.

Electricity seeks the path of least resistance. Touching a downed or exposed line can make you part of a circuit in which electricity travels through your body — including your heart — to reach the ground.

Protective devices throughout our system de-energize a line when a tree or other hazard is detected. However, CORE linemen and field personnel stress that “if it isn’t grounded, it isn’t dead.” Even if you think a downed or exposed line is dead, treat it as though it is still energized with the 7,200 volts at which most of our primary lines operate. **Stay at least 100 feet away, and call CORE immediately at (800) 332-9540.**

If you are in or near a vehicle that hits a pole or transformer and comes into contact with a line:



Stay in the vehicle and call 911, unless a fire or other hazard presents an immediate threat. Exiting the vehicle puts you at risk of creating a line-to-ground path for electricity.



If you absolutely must exit the vehicle, **avoid touching the vehicle and ground at the same time**. Jump or hop from it, and do not touch or reach back into the vehicle after exiting.



Electricity “ripples” out from the source and creates “step potential.” **Hop or shuffle away from the vehicle, feet together**, to avoid stepping across different voltage potentials.



Do not approach or touch a vehicle that is in contact with a line, even to aid someone in the vehicle. Doing so creates a potential line-to-ground path for electricity.

Dig this: Contact 811 before breaking ground

CORE encourages members to avoid possible fines, service interruptions, bodily injuries and even death by contacting Colorado 811 before breaking ground on any outdoor project this summer.

Request a free utility locate by visiting www.Colorado811.org or dialing 811 at least three business days before you start digging work of any extent or depth.

Professional utility locators will use flags and paint to mark the locations of underground electric, gas, cable, phone and other lines within the designated area.

Power-ful artwork

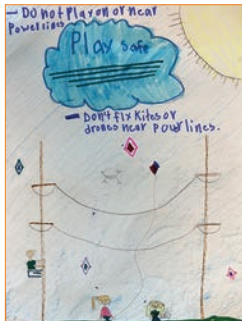
Artists in grades 1 through 5 submitted **electrical safety-related artwork** to CORE as part of National Electrical Safety Month. From the 100-plus entries received, CORE employees selected one winning piece of art from each grade. We awarded each winning artist \$100 and donated an additional \$500 to their classroom for supplies. Thank you to everyone who took the time to submit artwork! Be sure to **visit www.CORE.coop to see the excellent entries we received.**



Ethan L.



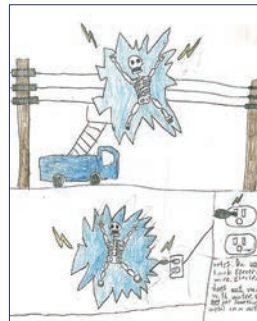
Quinn L. & Brynlee A.



Kennedy V.



Keenan H.



Colton P.

Secure your account with SmartHub



CORE's new account management platform, SmartHub, makes it easy to secure your account.

Just log into SmartHub at www.CORE.coop or through the app, then select My Profile. You can **update your email address and password, change your security phrase and create a secret hint question** for added security if and when you forget your credentials.

Don't have the SmartHub app? Download it in the App Store for iOS or Google Play for Android by searching for "SmartHub," or scan the QR codes to the left.

Note: You will need to enroll and create new credentials the first time you use SmartHub.

Connect with CORE this summer

Learn more about CORE at one of four **open house events** we have planned this summer.

CORE employees will be on hand to discuss and answer your questions about system improvements, billing and payment services, the cooperative model and other topics regarding CORE.

All events are scheduled for 5 to 7 p.m., and snacks and beverages will be provided. Visit www.CORE.coop for additional details.

Tuesday, June 7

Douglas County Fairgrounds
500 Fairgrounds Rd., Castle Rock

Thursday, June 9

CORE Bennett District Office
1092 Cedar St., Bennett

Thursday, July 7

Our Lady of the Pines
9444 Eagle Cliff Rd., Conifer

Tuesday, July 12

Ute Pass Cultural Center
210 E. Midland Ave., Woodland Park

