

THE OUTLET

The Official Member Newsletter of CORE Electric Cooperative

June 2022

THE GREAT  OUTDOORS

Connecting, healing, thriving

CORE has partnered with CoBank to **donate \$20,000 to The Aspen Effect** and its mission of building resiliency in Colorado's youth. The Castle Rock-based organization provides several **programs through which teens are mentored and learn to connect, heal and thrive**. Many of the programs involve the outdoors, and several include activities such as horse riding and animal care.

The joint donation with CoBank is part of a larger pledge CORE has made to help organizations improve mental health among Colorado youth. Children's Hospital Colorado has declared youth depression, anxiety and suicidal ideation a public emergency in recent years, and nonprofits like The Aspen Effect are in great need of support from community partners.

"The volunteers at The Aspen Effect are providing a great service for the youth of our communities," said CORE District 1 Director Michael Kempe, who recently presented the donation to The Aspen Effect. "We are excited to provide this important support for a great cause and encourage others to likewise donate their time and money to this worthy cause."

"We are so thrilled to partner with one of the greatest organizations that contributes to the Castle Rock and



Colorado communities," said Jerry Van Leuven, President of The Aspen Effect. "CORE has supported our small, growing nonprofit over the years and, this year, is joining forces with us in a much deeper relationship to have a positive impact on youth mental health."

For more info about The Aspen Effect and its programs, visit www.TheAspenEffect.org. Visit www.CoBank.com for more information on CoBank, which delivers loans, leases and other financial services to agribusiness, rural infrastructure and Farm Credit customers in all 50 states.

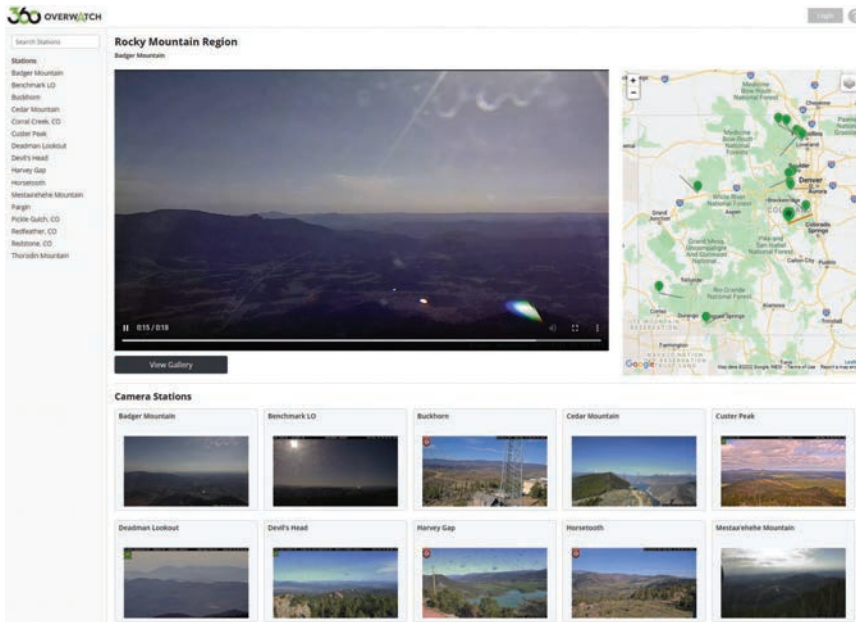
Avian plan protects our feathered friends

CORE follows a comprehensive Avian Protection Plan (APP) to **protect avian species while maintaining reliability**.

Our plan was updated last year to include the latest recommendations, guidelines and laws from conservation organizations and regulatory agencies. The plan helps us reduce bird deaths and injuries

through proactive approaches, including:

- Avian-aware engineering and construction standards and practices
- Equipment and structures less likely to attract or threaten birds
- Personnel training in mitigation against avian harm



CORE's eyes up high

CORE has another resource in our work to protect members, employees and the grid from wildfires.

We have worked with FTS Inc. to join the Rocky Mountain Pan-Tilt-Zoom (PTZ) Network, which operates a **series of shared cameras that monitor for wildfires and other threats.**

The network includes more than a dozen cameras in three states. Most of the cameras are in Colorado, and about half of those monitor the Front Range. CORE currently maintains one camera — on our Badger Mountain communications tower — and plans to install two more cameras in the near future. Each camera in the network has an effective viewing distance of 25 miles and can be remotely controlled to focus on a specific threat.

The PTZ network includes Colorado FireGuard, the state-managed program that provides early detection and detailed

As part of our commitment to mitigating the risk of wildfire, CORE follows and maintains a **comprehensive wildfire mitigation plan**. Visit www.CORE.coop > News and Resources > Wildfire Mitigation for more info.

situational awareness for fire threats throughout Colorado. CORE's financial support of the PTZ network also gives us access to FireGuard's early detection alert system, the Colorado Wildfire Information Management System, and data collected from the Colorado Multi-Mission Aircraft program. Additional partners, including other utilities, continue to commit to the PTZ network and will add another eight to 12 cameras this summer.

Live feeds from cameras on the Rocky Mountain PTZ network can be viewed by the general public at fts360overwatch.com.

Go paperless to save trees and time

Save trees *and* time with **CORE's free Paperless Billing option**, available via SmartHub.

You can switch to Paperless Billing one of two ways:

- On your computer, visit our website, www.CORE.coop, and log into SmartHub, select My Profile, then Update My Paperless Settings.
- In the SmartHub app, select More > Settings > Paperless Billing.

With Paperless Billing, you will receive an email and/or text message when your monthly bill is ready to view. **Note: Enrollment in Paperless Billing will apply to all accounts registered with your email address.**

Don't have our new app? Download it by searching for "SmartHub" in the App Store (iOS devices) or Google Play (Android), or scan one of the QR codes below.

