

VERIFIED SITE: HAYCAMP PARCEL 48

Site Information

Asking Price	\$5,000 - \$12,000 / acre
Size	320 acres
Location	Strasburg, CO
Owner	Camp B Land Company / HayCamp
Zoning	Agriculture

Transportation Access

Airport	18.4 miles to Colorado Air & SpacePort; 33.2 miles to Denver International Airport (DEN)
Highway	3.7 miles to I-70; 39.7 miles to I-25
Rail	No rail access.

Utilities

Electric	CORE Electric Cooperative. 5.5 - 7-mile extension, up to 17MW from 2 different substations available.
Natural Gas	Colorado Natural Gas. EnviroGas.
Water	HayCamp.
Wastewater	HayCamp.
Storm Water	HayCamp.
Fiber	Eastern Rural Technologies.

Available Documentation

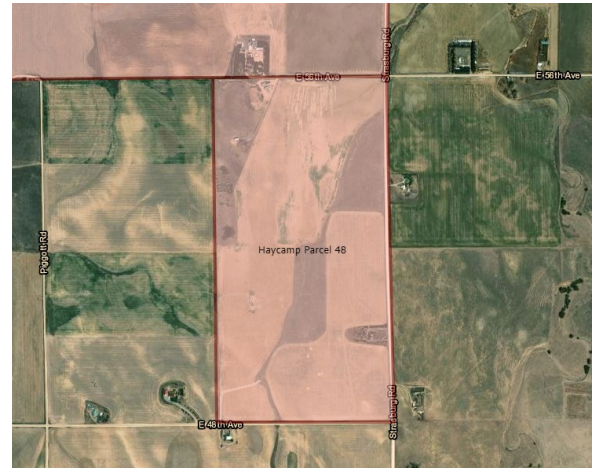
- Ownership Title
- Community Profile and Local Amenities
- Incentives Overview

Assessments

Endangered Species
Geotechnical Soil Study
Phase I Environmental

Maps

- Aerial
- FEMA Flood Plain
- Site Configuration
- Transportation
- Utility Service
- Wetlands



Contact Information

CORE Electric Cooperative
Robert Osborn, Esq.
Director of Business
Development
Phone | 720.733.5543
Email | ROsborn@core.coop

Property Contact
Krissy Kennedy
COO, Camp B Land Company
Phone | 720.280.7199
Email | KKennedy@haycamp.com

Community Economic Development
Lucas Workman
Economic Development Manager,
Adams County
Phone | 720.523.6820
Email | LWorkman@adcogov.org