

# THE OUTLET

The Official Member Newsletter of CORE Electric Cooperative

August 2025

## Rate increase starts in September

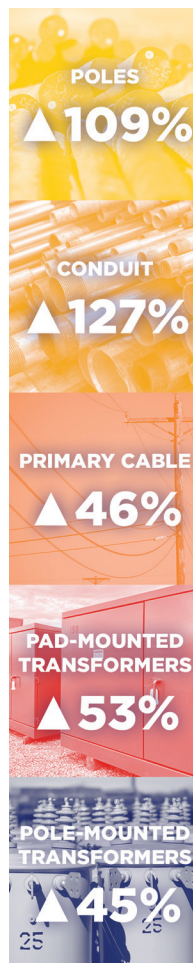
As a not-for-profit electric cooperative, CORE works to provide our members safe, reliable power and charge only what we need to acquire and distribute it.

Electric utilities, including CORE, are affected by the same external factors driving up costs for many products and services. Continued and significant increases in what we pay to deliver power have prompted our elected board of directors to approve **changes to the cooperative's rates and regulations that take effect with September 2025 bills**. The changes will result in an effective average rate increase of 5% across our residential, commercial, industrial and other services. More specifically, the changes increase the monthly basic service charge, demand charge and per-kilowatt-hour (kWh) rate for most services.

As noted on July's bills, for members on our residential service, the monthly basic service charge will increase to \$20 and the on-peak demand charge to \$4.87. The residential energy charge will remain at \$0.10819/kWh.

CORE raises rates only when absolutely necessary. Our most recent rate changes took effect with May 2025 bills and resulted in an increase of about 3% for most members. That 3% does not cover significant, unanticipated increases in CORE's costs to acquire and distribute the safe, reliable power we provide our members. The 5% rate increase that takes effect in September is necessary to help cover many cost pressures we anticipate will continue for the foreseeable future. Those pressures include:

**Power costs.** Nearly 50% of our costs are to obtain power for our members. As all Colorado electric utilities strive to meet the state's greenhouse gas emission reduction goals, CORE continues to invest in a flexible, reliable and responsible portfolio of energy resources



CORE has experienced significant increases in materials costs over the last five years.

and system upgrades to meet the growing and changing energy needs of our members.

**Supply chain.** Since the COVID-19 pandemic in 2020, costs for everything from poles to transformers have increased due to production issues in the U.S. and abroad. Demand for these supplies and materials has also increased as demand for electricity has grown.

**Regulatory uncertainty.** Transmission processes, tariffs and other tax incentives and regulatory changes affect costs for our cooperative.

We understand that even a slight increase affects our members and remain committed to identifying and implementing additional measures that help mitigate financial impacts to our members. Those measures include:

- A diverse portfolio of energy sources that ensures a reliable and responsible energy supply
- A continued "AA-" long-term issuer default rating from Fitch Ratings, which allows us to secure the most competitive rates from lenders
- Strategic and brief deferment of capital projects that do not affect safety and/or reliability
- An efficient workforce focused on streamlined operations and continuous improvement

For more information about the September 2025 rate changes, visit [www.CORE.coop](http://www.CORE.coop) > **My Cooperative > Rates and Regulations**.

# 2025 CORE education grant recipients

Since 1988, CORE has awarded grants to graduating high school seniors who plan to continue their education. This year we awarded grants to five recipients from each of our seven director districts. Recipients'

names were randomly drawn at a recent CORE Board of Directors meeting. Each recipient will receive \$2,000 to help with higher education expenses. The application window for next year's grants will open in January.

## District 1



**Sabrina Reffel**  
Colorado Christian University



**Henry Walsh**  
The New School Parsons



**Mariajose Miranda**  
University of Colorado, Boulder



**Nathan Glorioso**  
University of Colorado, Boulder



**Luke Gardner**  
Clark Honor College of University of Oregon

## District 2



**Sarah Harker**  
Pacific Lutheran University



**Wyatt Williamson**  
Red Rocks Community College



**William Stewart**  
Colorado School of Mines



**Kailey Mason**  
Colorado State University



**Natasha Wahnoutka**  
Arapahoe Community College

## District 3



**Gianni Piscitella**  
Arapahoe Community College



**Lauren Euler**  
University of Northern Colorado



**Sean Ray**  
University of Colorado, Boulder



**Palisade Zurek**  
Colorado State University



**Rylee Schoendaller**  
Colby Community College

## District 4



**Holden Miller**  
Mount Marty



**Julianna Thomas**  
Moody Bible Institute



**Teagan O'Mara**  
Grand Canyon University



**Spencer Dzurinko**  
Indiana State University



**Lana Chiu**  
Colorado State University

## District 5



**Karley Gustafson**  
University of Nebraska, Lincoln



**Imani Iverson**  
Colorado State University



**Jake Excell**  
Rocky Mountain College of Art and Design



**Genevieve McCullar**  
College of Wooster



**Addyson Witkamp**  
University of Tennessee, Chattanooga

## District 6



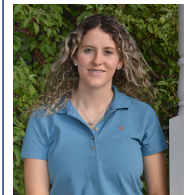
**Lily Bajayo**  
University of Nebraska, Lincoln



**Quinn Matthews**  
South Dakota School of Mines



**Cosme Vera**  
Seward County Community College



**Anna Vetter**  
Colorado State University



**Marissa Hendrickson**  
University of Colorado, Boulder

## District 7



**Brennan Harvey**  
Boise State University



**Wesley Roen**  
Grand Canyon University



**Benjamin Shafer**  
Texas Tech University



**Payton DeJager**  
University of Tulsa



**Alexis Glendenning**  
South Dakota School of Mines